

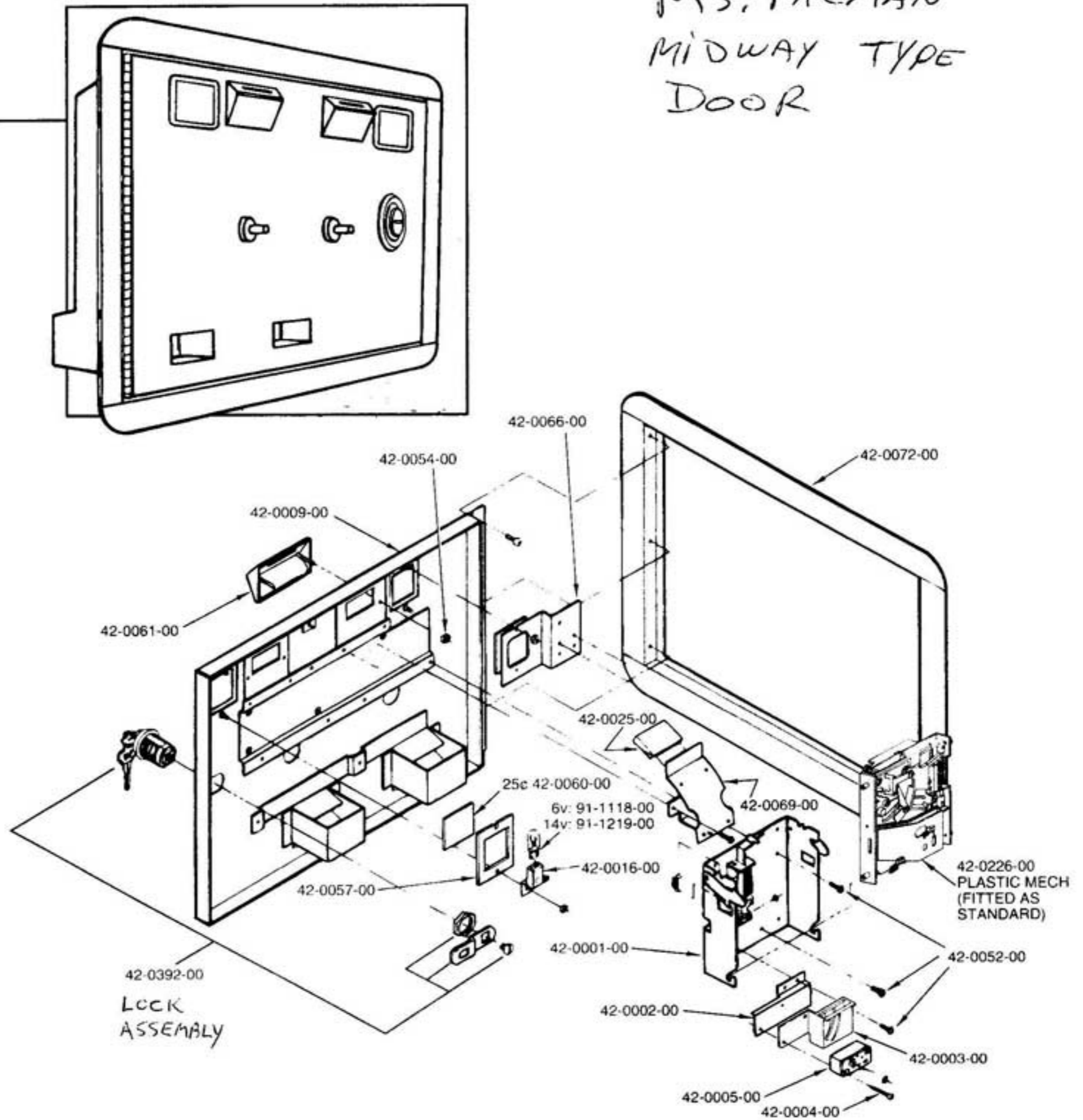
# COIN/CURRENCY CONTROLS

## FLAT DOOR Double Entry Door

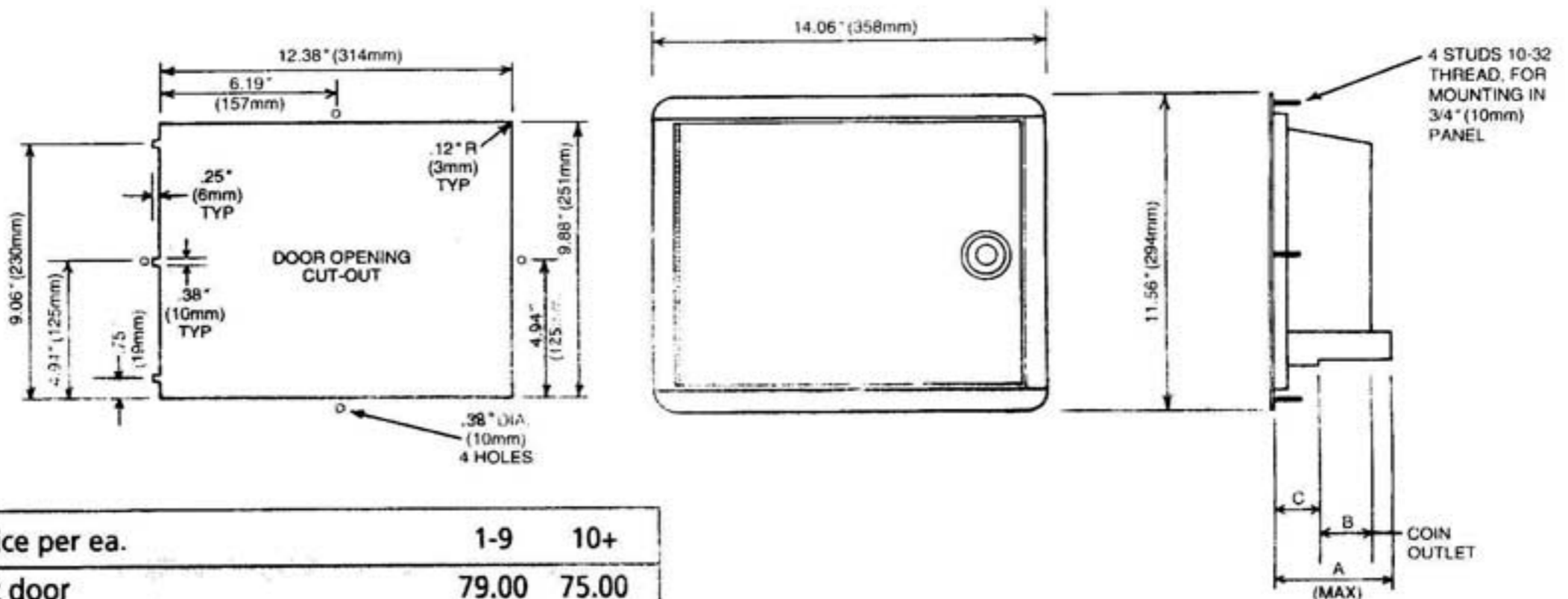
### Featuring:

- Double entry
- 16 ga. all steel construction
- Textured black epoxy paint
- Flat key lock
- Mounting studs for easy installation
- As used on Bally's "Pac-Man" and "Ms. Pac-Man"
- Quick release mech holders
- Each door coin tested before shipment
- Depth of door into cabinet is only 2.12"
- Ideal for cocktail table type games

MS. PACMAN  
MIDWAY TYPE  
DOOR



### MOUNTING DIMENSIONS



FLAT DOOR	Price per ea.	1-9	10+
40-0010-00 Flat door		79.00	75.00

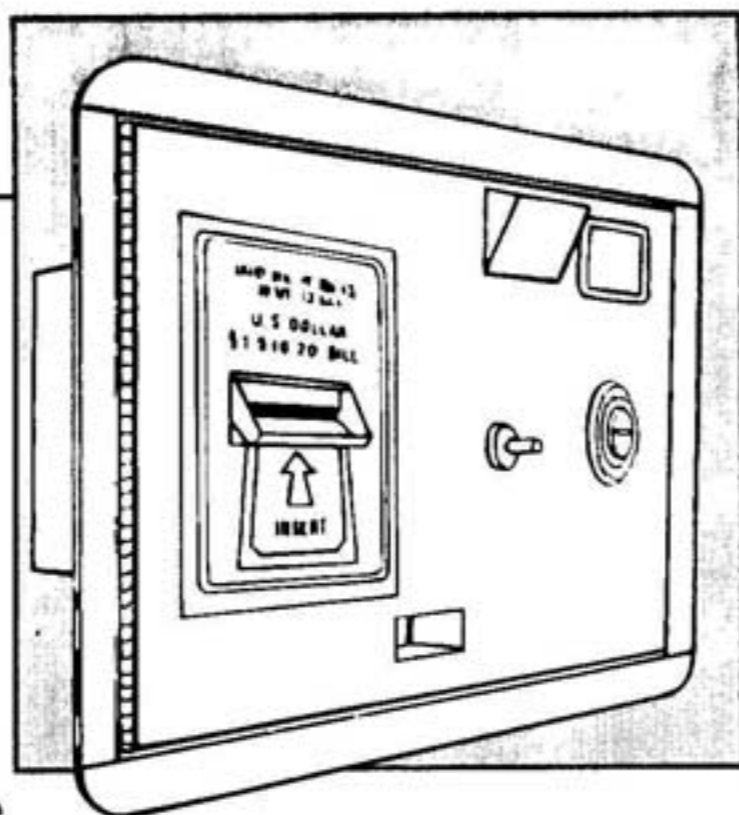
# COIN/CURRENCY CONTROLS

## DOORS FOR BILL VALIDATORS

### Poker Style Bill Validator Doors

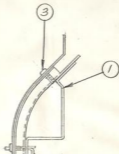
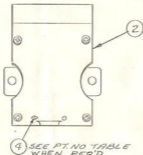
Featuring:

- Accepts bills and coins
- Available with all popular validators without stackers
- Available with or without validator
- Coin funnel for easy and rapid coin acceptance
- Mounting dimensions same as flat door, page 31



M.S. PACMAN  
TYPE WITH  
DOLLAR BILL  
ACCEPTOR

BILL VALIDATOR DOORS FOR POKER		Price per ea.
42-0185-00	Poker door assembly for Leisure Entertainment, DBV-26, w/o validator	80.00
42-0186-00	Poker door assembly for Mars VFM-4, w/o validator	75.00
40-0335-00	Poker door assembly complete with Leisure Entertainment, DBV-26 validator	350.00
40-0340-00	Poker door assembly complete with Mars VFM-4 validator	430.00



COTTER PIN MUST MOVE FREELY AFTER FORMING. FORMED END MUST NOT EXTEND BEYOND BOTTOM OF CHUTE ITEM 1.

	-	1	0017-00007-016Z	4	COTTER PIN
	4	4	0017-00101-0140	3	SCREW
	1	1	0090-00172-00XF	2	COIN CHUTE TOP
	1	1	A090-00081-00XF	1	COIN CHUTE & BRK'T ASSY
QUANTITY			PART NO	ITEM	DESCRIPTION

0010	0000
A090-00087-	

REL. FOR PRODUCTION	②
REVISIONS	2-13-81

DO NOT SCALE DWG.	HEAT TREAT	SCALE	NO. REQ'D
	<i>2</i>	<i>2</i>	

**MIDWAY MFG. CO.**  
FRANKLIN PK. ILL.

DIM. TOLERANCES UNLESS SPECIFIED	DRN. D.A.H.	MAY'L	COIN CHUTE & TOP ASSY
CONCENTRICITY T.Y.R. 800	CRD. D.HERRICK	FINISH	
FRACTIONAL .001	DATE 6-29-81		
DECIMAL .001			
HOLE DIA. .001			

PART NO.	SEE CHART
A090-00087-	

# ANTI-WIRE CHEAT CLIP



1. Remove acceptor.
2. Install clip as shown, over edge of coin return cup.
3. Flat side on inside of cup.
4. Replace acceptor.
5. Source for clip :

Topy International Inc.

1 5 8 3 Elmhurst road

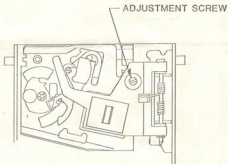
Elk Grove Village ,Ill. 60007

(312)-439-6560

Their Pt. No. S10203

*D. Bernick*  
11-2-81

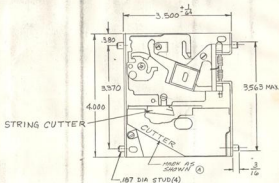
ANTI-CHEAT NICKEL ADJUSTMENT  
COIN-CO ACCEPTOR  
MIDWAY p/n 0017-00005-0214



*about 200*

APPROVED SOURCE:  
 COIN ACCEPTORS INC.  
 ST. LOUIS, MISSOURI 63110  
 THEIR PART NO: 363-16

Ⓢ



IF DIMENSIONS DO NOT AGREE WITH PART, FOR PRODUCTION, YOU  
 MUST CONTACT THE DESIGNER.  
 REVISION 168

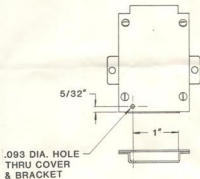
DO NOT SCALE DIMS. NO HIDE  
 USED ON CASH DRAW

MIDWAY MFG. CO.  
 FRANKLIN PARK, ILL. 60131

DIM. TOLERANCES UNLESS SPECIFIED	FIN. SURFACE	FINISH	REF. DIM.
ASSEMBLY FITS: .005	FREE	FREE	—
HOLES: .005	FREE	FREE	—
KEYS: .005	FREE	FREE	—
ALL DIMS: .005	FREE	FREE	—

COIN ACCEPTOR (25¢)  
 W/STRING CUTTER  
 PART NO. 4740005-0214

## ANTI-CHEAT COIN CHUTE REWORK



1. Drill .093 DIA. hole thru cover and bracket as shown.
2. Remove burrs from edges of hole after drilling.
3. Insert  $1/16''$  DIA. cotter pin.
4. Pin must move freely
5. Object is to kick penny to the right and slow it down.
6. Make sure quarter will pass through after cotter pin is inserted.

*Aspenick*  
2-20-01

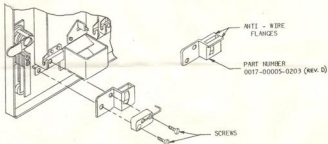
# ANTI-CHEAT-DEVICES

## MIDWAY PART NO.

A090-00087-0000	COIN CHUTE WITH PIN
A090-00064-0000	ANTI-PENNY DEVICE
0017-00005-0003	METAL ACCEPTOR WITH STRING CUTTER (COIN MECH)
0017-00005-0214	METAL ACCEPTOR WITH STRING CUTTER (COIN ACCEPTORS INC.)
0017-00005-0211	PLASTIC ACCEPTOR WITH ANTI-STRING DEVICE (COIN ACCEPTORS INC.)
A090-00061-0000	ANTI-STRING DEVICE
A090-00061-0100	ANTI-STRING DEVICE-MINI
	ANTI-WIRE CHEAT CLIP

*W. Pennick*  
2-18-81



ANTI - WIRE COIN SWITCH GUIDEPART NO. 0017 - 00005 - 0203

1. TURN POWER OFF TO THE GAME.
2. Open the coin door and locate the microswitch at the bottom of the coin acceptor mechanism. See above Figure.
3. Remove the two indicated screws which secure the microswitch and the coin guide to the bracket on the coin door and set them aside.
4. Remove and discard the old coin guide, replacing it with the new ANTI-WIRE COIN GUIDE provided in your kit.
5. Install the new ANTI-WIRE COIN GUIDE and the old microswitch to the bracket on the coin door with the screws you removed in Step 3 above. They should be positioned as shown in the above Figure.
6. Repeat this procedure for the remaining coin acceptor coin guide(s).
7. Turn the power to the game back on and run the game Self-Test.
8. Take the game out of Self-Test and drop some coins through each coin acceptor to make sure they are all working properly.
9. Close and lock the coin door.

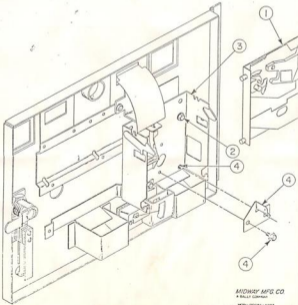
*D. Bennett*  
2-10-82

ANTI-PENNY DEVICE INSTALLATION

A090-00064-0000

9800 1500  
M05 2086

1. REMOVE COIN ACCEPTOR FROM BRACKET.
2. REMOVE (3) HEX HEAD SCREWS THAT HOLD BRACKET TO DOOR.
3. REMOVE BRACKET FROM DOOR.
4. INSTALL ANTI-PENNY DEVICE MIDWAY PART NO. A090-00064-0000 USING (2) 6 x 4 SLOT HEX HEAD SCREWS MIDWAY PART NO. 0017-00101-0099. MOUNT DEVICE WITH 1 SCREW FROM THE FRONT AND 1 SCREW FROM THE BACK OF BRACKET AS SHOWN.
5. SCREW BRACKET BACK TO DOOR AND SNAP COIN ACCEPTOR BACK IN PLACE.



MIDWAY MFG CO  
A BULLY COMPANY  
MIDWAY, MISSOURI  
REV B

# ANTI-STRING DEVICE INSTALLATION

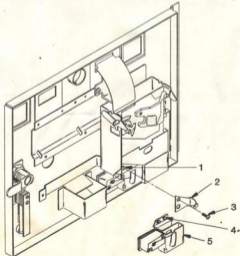
## DETERMINE WHICH KIT YOU NEED

If ITEM 5 below (coin guide & switch assy.) on your game is made of plastic, order KIT NO. A090-00061-0100. You will receive ITEMS 2 and 3 below only.

If ITEM 5 below (coin guide & switch assy.) on your game is made of metal, order KIT NO. 0090-00901-0000. You will receive ITEMS 2, 3, and 5 below.

## INSTALLATION INSTRUCTIONS

1. Remove 1/8" long slot head machine screw.
2. Install ANTI-STRINGING DEVICE (Midway p/n 0090-00907-0000).
3. Replace 1/8" long slot head machine screw (STEP 1) with 3/8" long SEMS phillips head screw (Midway p/n 0017-00101-0339).  
**IF COIN GUIDE (ITEM 5) IS PLASTIC, INSTALLATION IS COMPLETED. IF NOT, PROCEED WITH STEPS 4 & 5.**
4. Remove (2) #6 hex washer head screws which mount coin guide and switch assy. to coin acceptor mounting. Discard.
5. Replace with new coin guide and switch assy. (Midway p/n A090-00077-0000) using (2) #6 hex washer head screws removed in STEP 4.



SWITCH ADJUSTMENT TO PREVENT CREDIT  
WITH STRINGING QUARTER  
(for PAC-MAN & RALLY-X games only)

FIG. 1-Normal free position.

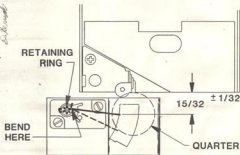
FIG. 2-Reform trip wire making it straight.

FIG. 3-Make bend in trip wire as close to retaining ring as possible to dimension shown.



-FIG. 1-

-FIG. 2-



-FIG. 3-



-FIG. 4-

**ALTERNATE METHOD:**

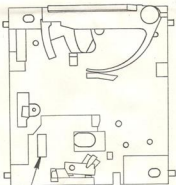
Form wire straight per FIG. 2.

Reform wire per FIG. 3 (dotted line).

Using quarter as gauge, reform wire until quarter is in position shown with anti-string pawl engaged (see FIG. 4).

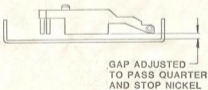
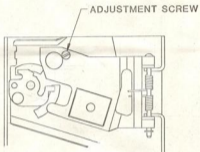
Switch must remain in open (off) position until quarter is lowered further after wire is formed.

COIN-CO ACCEPTOR (PLASTIC)  
MIDWAY p/n 0017-00005-0211  
SLOT REQUIREMENT



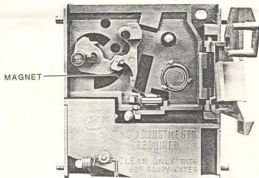
REQUIRED FOR  
MIDWAY ANTI-PENNY DEVICE

ANTI-CHEAT NICKEL ADJUSTMENT  
COIN MECH ACCEPTOR  
MIDWAY p/n 0017-00005-0003



**COIN-CO PLASTIC ACCEPTOR  
MAGNET ADJUSTMENT  
MIDWAY p/n 0017-00005-0211**

**ACCEPTOR CAN BE SET TO ACCEPT U.S. QUARTERS ONLY  
OR BOTH U.S. AND CANADIAN QUARTERS.**



→ **SLIDE MAGNET TO EXTREME RIGHT  
(AS PICTURED) TO ACCEPT BOTH  
U.S. AND CANADIAN QUARTERS.**

**TO ACCEPT U.S. QUARTERS ONLY,  
SLIDE MAGNET TO EXTREME LEFT.** ←

*D. H. Smith*